

VISCOFLUX Lite Quick Reference Guide

System Set-up & Use



More than just pumps

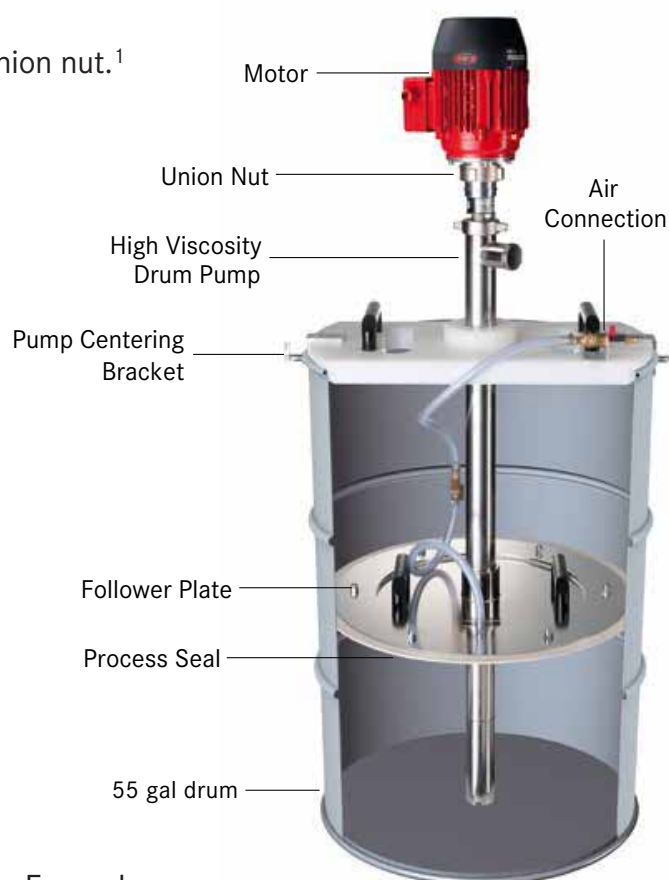
1. Open up drum. If drum has a plastic bag liner, fold plastic over drum rim and pull down.
2. Lower follower plate into drum by hand until it makes contact with product.
3. Place pump centering bracket on top of drum and secure in place by tightening the (2) side clamps.
4. Connect VISCOFLUX Lite air hose from follower plate to valve on top of centering plate.
5. Insert pump through the round opening in middle of centering bracket and through the follower plate.
6. Continue lowering pump slowly until it reaches the bottom of the drum.
7. Install motor on the top of the pump by placing the motor and hand tightening the union nut.¹
8. Connect discharge hose to pump discharge port.
9. Affix other end of hose to desired location.
10. Turn on motor to start pumping.
11. Follower plate will continue to go down as the product is pumped out.
12. Once the follower plate reaches the bottom of the drum, turn off motor.
13. Follower plate will 'stick' to the bottom of the drum (pumping action has created a vacuum).
14. Connect plant air hose to VISCOFLUX Lite air connection on top of centering bracket.
15. Open air valve slowly to let air into the drum.
16. Follower plate will begin to released from the bottom of the drum.
17. Hang hose with clip on side of drum.
18. Remove motor from top of pump by loosening the union nut.¹
19. Lift and remove pump out of drum slowly when follower plate is half way up the drum.²
20. Lift and remove centering plate from top of drum.²
21. Lift follower plate out of bottom of drum.²
22. Start cleaning protocol.³

Notes:

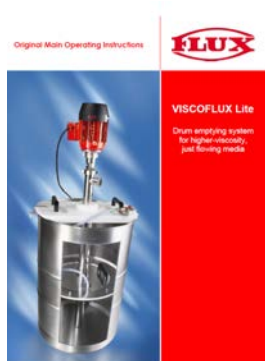
¹ If combined weight of pump and motor do not exceed company guidelines for safe lifting and the operator is comfortable with this weight, the motor may be left in place between drums.

² Place these items on a clean surface when removing from the drum. Make sure they are stable so as to not fall or get knocked over.

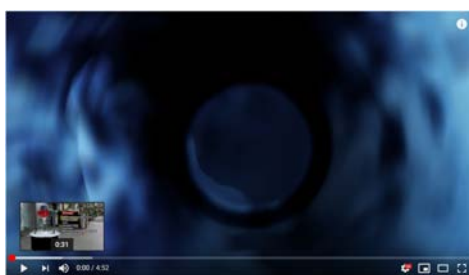
³ Protect motors and gearboxes from water when necessary.



[Click for Operation Manual](#)



[Click for Video Example](#)



FLUX PUMPS CORPORATION
300 Townpark Drive, Suite 130
Kennesaw, GA 30144, USA
Phone 800-367-3589
info@fluxpumpsusa.com
www.fluxpumpsusa.com